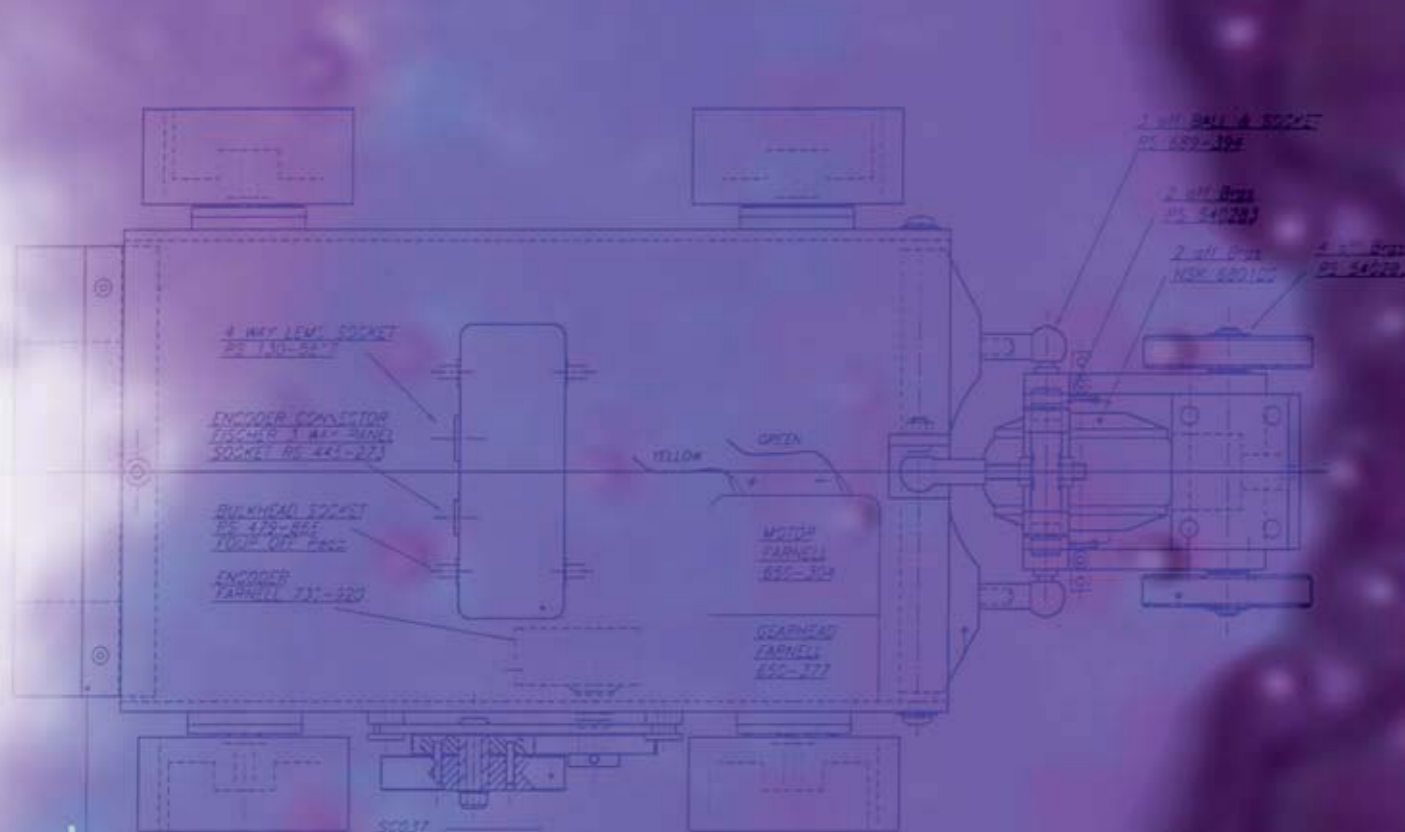


Technology Driven
Not Operator
Dependent



Technology Driven
Not Operator
Dependent



ScanmapVS

Silverwing UK
Unit 31
Cwmdu Industrial Estate
Carmarthen Road
Swansea, SA5 8JF
Wales, UK

t: +44 (0) 1792 585533
f: +44 (0) 1792 586044
e: mfl@silverwinguk.com
w: www.silverwinguk.com

Silverwing Middle East
P. O. Box 75950
Dubai
United Arab Emirates

t: + 971 4 338 0811
f: + 971 4 338 0992
e: aashton@silverwingme.com
w: www.silverwingme.com

Silverwing Africa
Private Bag X1
Postnet Suite 419
Melkbosstrand
7437
South Africa

t: + 27 21 557 5740
f: + 27 21 557 4354
e: rnel@silverwingafrica.com
w: www.silverwingafrica.com

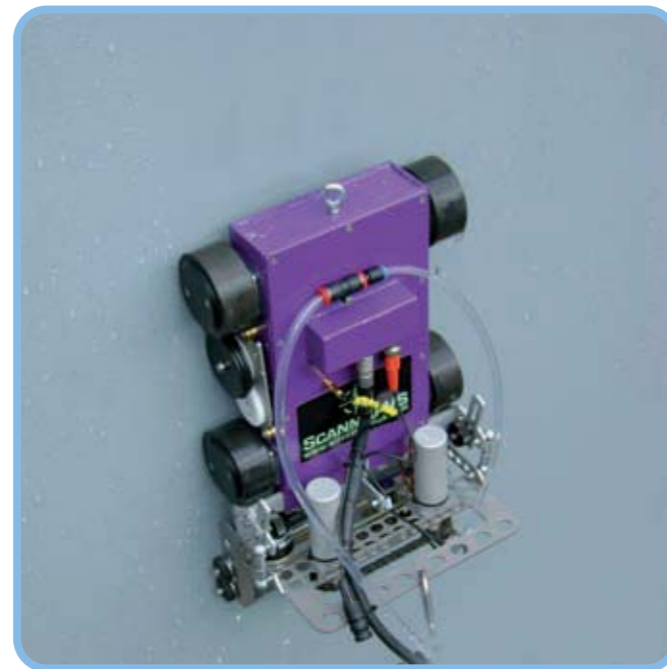


Remote Access Ultrasonic C-Scan Imaging System

The ScanmapVS system utilises the proven reliability of the Scorpion wall crawler with an added transverse scanner fitted to the front end. The transverse scanner covers a 130 mm wide strip at a speed of 600 mm per second. With a forward crawler speed of 900 mm per minute, the ScanmapVS provides rapid inspection whilst achieving complete UT coverage. Using a single 10mm diameter short pulse 5MHz transducer mounted in a water column the ScanmapVS is

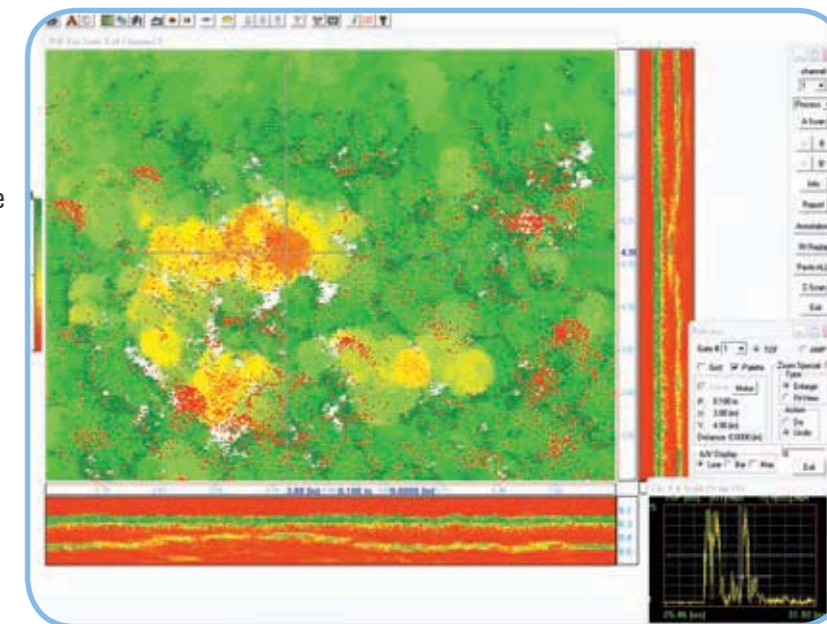
effectively a remote access immersion system. Sampling every 6mm in the direction of travel ensures that all corrosion is mapped while maintaining continuous forward motion.

By combining an existing high speed ultrasonic pulser/receiver card and ultrasonic imaging software with the Scorpion scanner, the ScanmapVS benefits from proven technology at the outset. Stored data can be viewed as either A-scan, B-scan or C-scan images.



Key Features

- A-Scan, B-Scan and C-Scan
- 6mm Raster Pitch Gives 100% Coverage
- 130mm Scan Width 900mm/min Forward Speed
- Scan upto 7M2 per Hour
- Vertical or Circumferential Scans
- Powerful Analysis / Reporting Tools



The adjustable scanning head allows inspection of small vessels and pipes with a minimum diameter of 1m. The ScanmapVS now makes it possible to ultrasonically scan a 130mm wide strip vertically up tank walls and columns or circumferentially around vessels and pipework, covering approx. 7 square meters per hour. Meet or even exceed the requirements of the relevant inspection standards without the need for costly rope access or scaffolding.

Technical Specification

Dimensions	Length 405 mm x Width 250 mm x Height 120 mm
Weight without cables	8 Kg
Adhesion	Neodymium iron boron magnets mounted in centre of carriage
Pull off force	13.6 Kg
Drive	four (4) independent 12 volt Dc motors
Drive wheels	coated in special non-slip synthetic rubber compound
Forward Speed	900 mm/min
Scan Width	130mm
Umbilical Cable	length 30 metre
Transducer	Single short pulse 5MHz
Power supply	220/110 vac input 12vdc operation

ScanmapVS System Supplied

- Windows
- PC PIII 2GHz or better processor
- 256MB RAM or better
- 40GB Hard drive with space for installation
- CD Rom
- SVGA 800 x 600 minimum resolution display
- Mouse & Keyboard

