

Technology Driven
Not Operator
Dependent



Technology Driven
Not Operator
Dependent

Product Codes	Description
V400C	VAC BOX Shell-Floor Weld 20 Inch Hg for use with Vac Pump
V400CAVG	VAC BOX Shell-Floor Weld 20 Inch Hg Air Vac Generator
V400DDUALFUNCTION	VAC BOX Shell-Floor Weld 20 Inch Hg Dual Vacuum Pump or compressor driven
V400LP	VAC BOX Shell-Floor Weld 10 Inch Hg for use with Vac Pump
V400LPAVG	VAC BOX Shell-Floor 10 Inch Hg Compressor Driven
V600DDUALFUNCTION	VAC BOX Plate Weld 20 Inch Hg Dual Vacuum Pump or compressor driven
V600F	VAC BOX Plate Weld 20 Inch Hg for use with Vac Pump
V600FAVG	VAC BOX Plate Weld 20 Inch Hg Compressor Driven
V600LP	VAC BOX Plate Weld 10 Inch Hg for use with Vac Pump
V600LPAVG	VAC BOX Plate Weld 10 Inch Hg Compressor Driven
VP110	110V Vacuum Pump
VP240	240V Vacuum Pump
VACH2C	VAC box 10 M Hose with threaded couplings
VACH1C	VAC box 10 M Hose with one threaded coupling

Spares & Accessories	Description
V619	Seal for V600LP / V600LPAVG
SW001365	Tube of Vacuum Box seal adhesive
SW002099	Leak test solution - powder concentrate, 1 KG
SW0001457	Vacuum Pump Service

Vacuum Box



ELECTRIC VACUUM PUMP OR COMPRESSOR DRIVEN

HIGH PRESSURE VACUUM BOXES RATED TO 20 inch Hg



V600D Dual Function

Physical Dimensions L 780 x W 280 x H 230 mm

Weight 10.35 kg

For butt or lap welds in tank floors and flat plates

Weld test length 600mm

V400D Dual Function

Physical Dimensions L 660 x W 310 x H 380 mm

Weight 8.95 kg

Weld test length 400 mm

Min Tank Diameter 5 meters

For internal shell to annular welds



Silverwing UK Ltd
Unit 3-1
Cwmdu Industrial Estate
Carmarthen Road
Swansea, SA5 8JF
Wales, UK
t: +44 (0) 1792 585533
f: +44 (0) 1792 586044
e: sales@silverwinguk.com
w: www.silverwinguk.com

Silverwing Middle East LLC
P. O. Box 75950
Dubai
United Arab Emirates
t: + 971 4 338 0811
f: + 971 4 338 0992
e: aashton@silverwingme.com
w: www.silverwingme.com

Silverwing Africa (PTY) Ltd
Private Bag X1
Postnet Suite 419
Melkbosstrand
7437
South Africa
t: + 27 21 557 5740
f: + 27 21 557 4354
e: rnel@silverwingafrica.com
w: www.silverwingafrica.com

Vacuum Box

Vacuum Box

Silverwing UK Ltd produces a range of vacuum boxes suitable for both new build inspection and inservice inspection. Unlike some vacuum boxes that rely upon a vulnerable vacuum gauge the Silverwing range have calibrated vacuum relief valves fitted as standard. The use of a calibrated (recalibration required annually) vacuum relief valve ensures that not only do they meet the requirements of applicable international standards but the box cannot be damaged by drawing too great a vacuum.

The vacuum is generated by the use of an electric vacuum pump or by use of an Air Vacuum Generator (AVG) and external compressor. The vacuum boxes are rated to either 20 inch Hg (10psi/0.7bar) or 10 inch Hg (5psi/0.37bar) depending on usage. Inspection companies tend to use the electric pump with the vacuum boxes due to its ' greater flexibility while construction companies tend to use the AVG based systems.

ELECTRIC VACUUM PUMP

Physical Dimensions	L 500 x W 250 x H 310 mm
Power Supply	110 v or 220 v [specify at time of order]
Weight	27.70Kg



AIRLINE HOSE

Physical Dimensions	L 10 m Diameter 13 mm
Weight	3.2 Kg
Max Pressure Rating	20bar / 300PSI
VACH2C	For use with an electric vacuum pump
VACH1C	For use with a compressor

ELECTRIC VACUUM PUMP DRIVEN

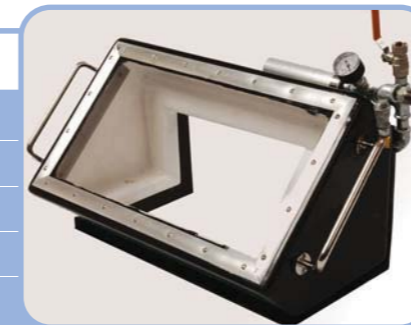
HIGH PRESSURE VACUUM BOXES RATED TO 20 inch Hg



V600F	
Physical Dimensions	L 780 x W 280 x H 230 mm
Weight	10.35 kg
For butt or lap welds in tank floors and flat plates	
Weld test length	600mm

V400C

Physical Dimensions	L 660 x W 310 x H 380 mm
Weight	8.95 kg
Weld test length	400 mm
Min Tank Diameter	5 meters
For internal shell to annular welds	



LOW PRESSURE VACUUM BOXES RATED TO 10 inch Hg



V600LP	
Physical Dimensions	L 660 x W 220 x H 150 mm
Weight	2.5 kg
For butt or lap welds in tank floors and flat plates	
Weld test length	600mm

V400LP

Physical Dimensions	L 540 x W 220 x H 220 mm
Weight	4.0 kg
Weld test length	400 mm
Min Tank Diameter	5 meters
For internal shell to annular welds	



COMPRESSOR DRIVEN

HIGH PRESSURE VACUUM BOXES RATED TO 20 inch Hg



V600FAVG	
Physical Dimensions	L 780 x W 300 x H 230 mm
Weight	11.30 kg
For butt or lap welds in tank floors and flat plates	
Weld test length	600mm

V400CAVG

Physical Dimensions	L 660 x W 310 x H 390 mm
Weight	9.15 kg
Weld test length	400 mm
Min Tank Diameter	5 meters
For internal shell to annular welds	



LOW PRESSURE VACUUM BOXES RATED TO 10 inch Hg



V600LPAVG	
Physical Dimensions	L 660 x W 220 x H 250 mm
Weight	2.75 kg
For butt or lap welds in tank floors and flat plates	
Weld test length	600mm

V400LPAVG

Physical Dimensions	L 540 x W 230 x H 230 mm
Weight	4.25 kg
Weld test length	400 mm
Min Tank Diameter	5 meters
For internal shell to annular welds	

